

Apollo Stone



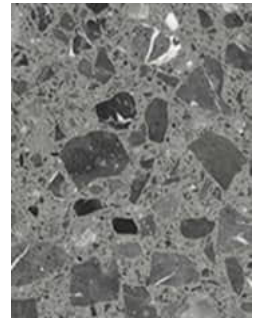
100
Marble



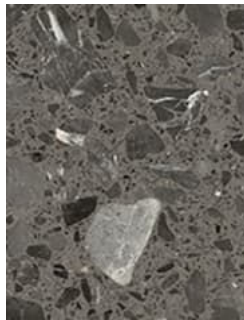
705
Silver



730
Buff



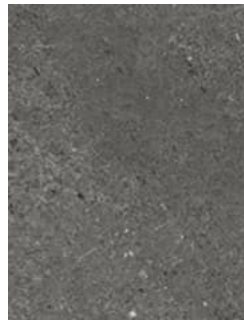
760
Carbon



765
Granite



770
Steel



780
Slate



790
Basalt

Apollo Stone

Apollo Stone allows you to bring a stunning natural stone, slate or tile look to your floor with a waterproof surface^ extra warmth underfoot. With no need to seal, installation is quick and easy. You'll be able to walk on your new floor the very same day. Choose from a stunning selection of natural stone styles that will add instant appeal in to any space.

Technical Data

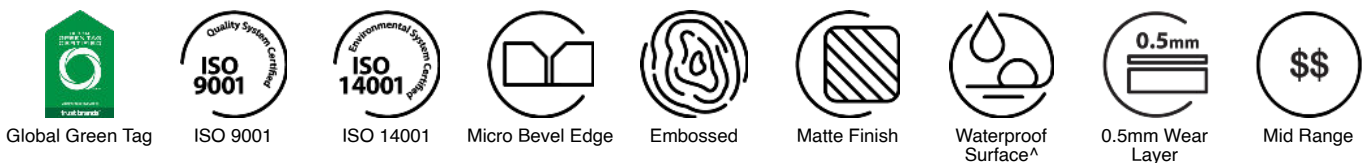
Type:	Hybrid Flooring	Finish:	Matte
Dimensions:	915mm x 228mm	Surface:	Embossed
Thickness:	6.5mm	Top Layer:	Decorative Film & Wear Layer
Wear Layer:	0.5mm	Substrate Layer:	Trigon® Core Technology (Limestone Composite)
Units Per Box:	9 boards	Backing Layer:	1.5mm EVA
m² per box:	1.88	Profile:	Micro Bevel
m² per pallet:	112.8	Coating System:	PUR & Scratch Resistance
Colours:	8	Installation Method:	Angle-Angle

Performance

Dimensional Stability:	(ISO 23999) Length: 0.05%, Width: -0.00%, Curling: 0.00%	Impact Sound Reduction:	Please refer to Godfrey Hirst Acoustic Performance specification sheet
Thermal Resistance:	(EN 12667) 0.056m ² .K/W	Light Fastness:	(ISO 105-B02) Grade 6
Thermal Conductivity:	(EN 12667) 0.115 W/(m.K)	Light Reflectance Values:	Available on Request
Abrasion Rating:	(EN 660-2) Group T	Flammability:	(EN ISO 9239) CRF 10.9kW/m ²
E3 Internal Moisture:	All wet areas - E3/AS1 – 3.0 Watersplash – (Alternative Solution)^	Smoke Value:	(EN ISO 9239) 81% minutes
Swelling after submersion in water:	(ISO 24336) 0.3%	Slip Resistance:	(AS 4586) P3

Sustainability

Product Transparency:	Global Green Tag, GreenRate Level A certified
Accreditation:	Manufactured under a quality and environmental system certified and complying with ISO 9001 and ISO 14001 by an accredited certification body.
Global Green Tag:	GreenRate Level A Certified
Indoor Air Quality:	Green Building Council Compliant for VOC emission rate limits



Apollo Stone



Uniclic®