

Tasman



120
Murchison



180
Marlborough



300
Takaka



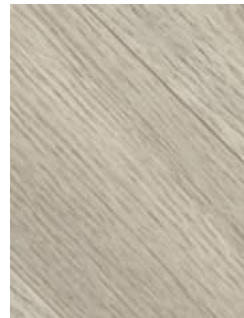
310
Boardwalk



320
Coastway



500
Richmond



720
Nelson



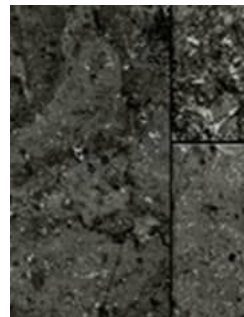
740
Motueka



750
Mapua



760
Saxton



790
Castle Point

Tasman

Tasman Vinyl is a multi-layer flooring solution that comes in a wide variety of patterns and with the capability for countless design possibilities. Made in Belgium in some of the world's most efficient flooring factories, it is a high-quality solution that's ideal for a broad range of projects.

Technical Data

Type:	Vinyl Sheet Flooring	Colours:	11
Thickness:	2.8mm	Country of Origin:	Belgium
Wear Layer:	0.2mm	Finish:	Matte
Roll Width:	2m	Top Layer:	Natural Feel
Pattern Repeat:	Please refer to swatch images	Installation Method:	Direct Stick

Performance

Dimensional Stability:	(ISO 23999) norm $\leq 0,40\%$	E3 Internal Moisture:	All wet areas - E3/AS1 (Acceptable Solution) [^]
Thermal Resistance:	(EN ISO 12466) 0,0112m ² .K/W	Smoke Value:	EN ISO 9239: 64% min
Thermal Conductivity:	(EN 12524) 0,25 W/(m.K)	Slip Resistance:	AS4586:2013: SRV: 21 : P1
Classification:	(EN ISO 10874) 22	Residual Indentation:	(EN ISO 24343-1) <0,20 mm

Sustainability

Accreditation:	Manufactured under a quality and environmental system certified and complying with ISO 9001 and ISO 14001 by an accredited certification body.
Indoor Air Quality:	LOW VOC



Waterproof Surface[^]



ISO 9001



ISO 14001



Affordable



European Made